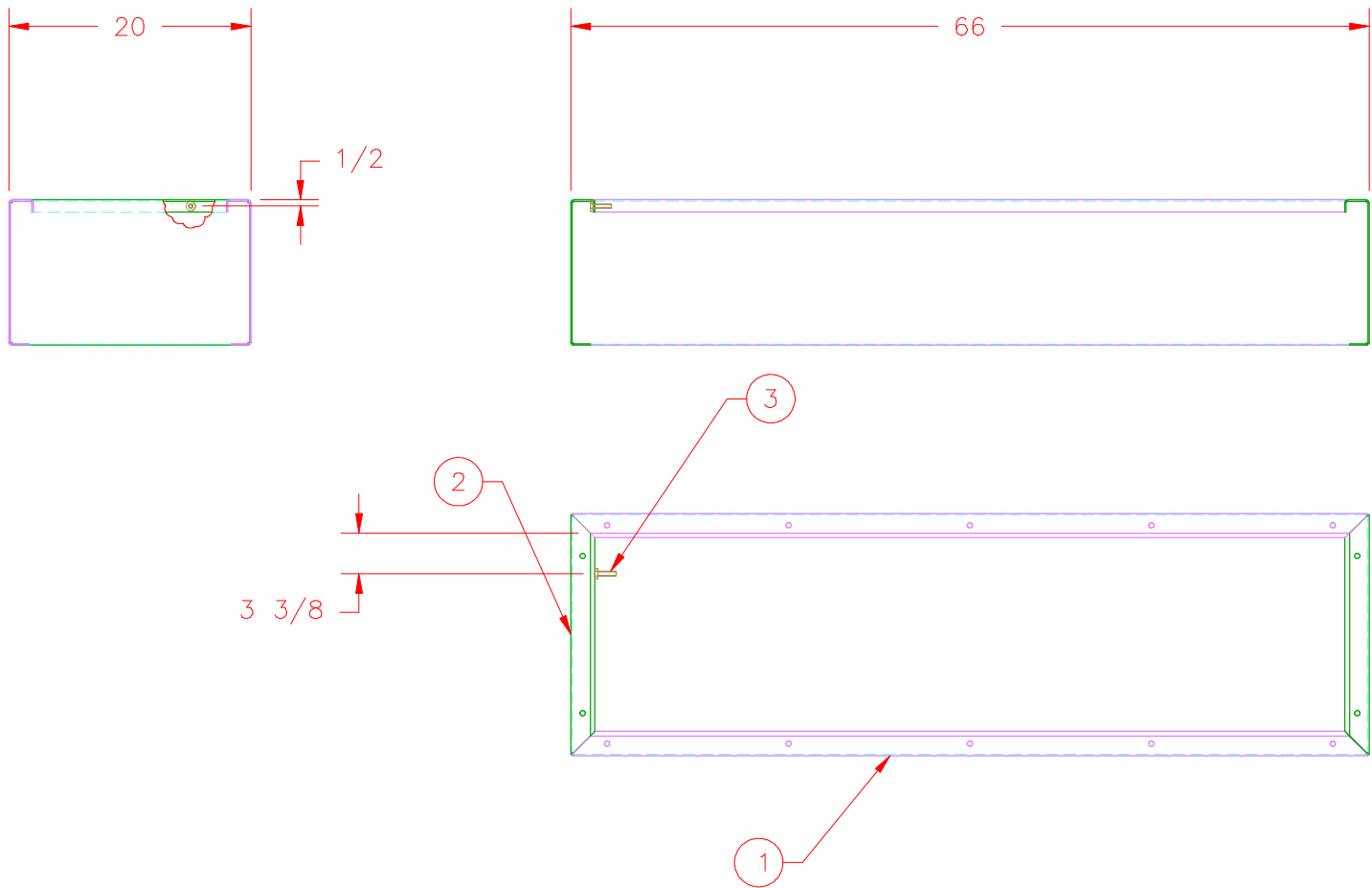


This drawing contains confidential proprietary information of Triple C, Inc. and is subject to return upon request. The furnishing of this drawing is not to be construed as the grant of any license, express or implied, to manufacture, have manufactured, use or sell the structures shown hereon.



TRIPLE C
INC.

P.O. BOX 248, SABETHA, KS 66534
(785) 284-3674 FAX (785) 284-3931

TOLERANCES
Unless otherwise specified
XX .010
XXX .005
XXXX .0005
X/X 1/32
ANGLE 0°30'

SHEET
OF
SCALE:
1:16
DRAWN BY:
CHRIS ABERLE
09/07/06
TITLE:
KIT, RISER,
HF-1200, WDMT

ITEM	MATERIAL \ DESCRIPTION	LENGTH	QTY	DRAWING NO.
1	HF12-68 SIDE		2	30-2400
2	HF12-69 END		2	30-2401
3	BO 3/8X1-1/2 HCS		1	

ASSEMBLY NUMBER:
HF12-67
DRAWING NUMBER:
30-1406
REV